

Veritas™ Desktop and Laptop Option 9.6
Edge Server Installation and Configuration
in
Workgroup

Introduction	3
Port Requirements	3
Installing Edge Server in Workgroup.....	3
Steps to Add and Configure the Edge Server in DLO console	5

Introduction

This document explains how Veritas DLO Edge Server component can be installed and configured in a non-domain machine (workgroup environment).

The Edge Server acts as a gateway between external and internal network. When taking Backup Over Internet (BOI), DLO agent connects to Edge Server by providing authentication credentials and execute tasks.

Existing Behaviour in 9.5 - Installing Edge Server component was mandatory on a machine connected to domain.

Change in 9.6 onwards - Edge Server component can be installed and configured in a non-domain machine (Workgroup) which was not supported, earlier. However, we continue to support the existing behavior of installing Edge Server in a domain environment, as well.

Port Requirements

This section explains the port requirements that needs to be ensured when installing Edge Server. The port requirement continues to be the same as DLO 9.5.

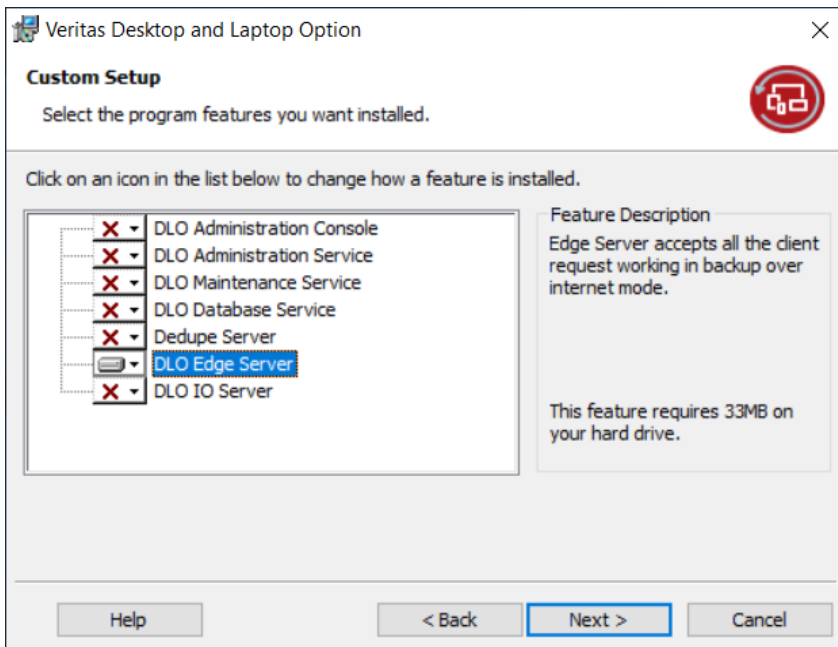
Port Configuration for DLO Edge Server Component

Process	Port	Port Type	Non BOI Deployment	Exclusive BOI Deployment	Occasional BOI Deployment
Edge Server Port	443	HTTPS	NA	Source (Outbound): DLO Administration Console Destination (Inbound): DLO Edge Server	Source (Outbound): DLO Administration Console Destination (Inbound): DLO Edge Server
Edge Server Port	90	HTTP	NA	Source (Outbound): DLO Administration Console Destination (Inbound): DLO Edge Server	Source (Outbound): DLO Administration Console Destination (Inbound): DLO Edge Server

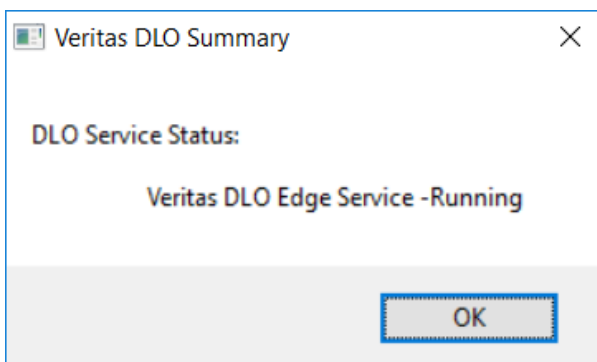
Installing Edge Server in Workgroup

Below are the steps to deploy Edge Server in Workgroup environment:

1. Run the setup.exe from the installation package. Select the acceptance agreement. The following screen appears:



2. Select **DLO Edge Server** from list.
3. Select the destination folder path and start the installation process. After successful installation, the Veritas DLO Summary page appears as shown below:



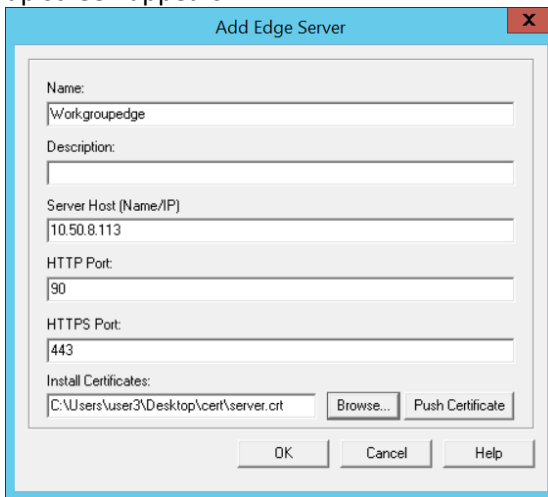
Steps to Add and Configure the Edge Server in DLO console

To configure the Edge Server, keep handy the SSL certificate and key files. You can find it from Apache folder path where you've installed the DLO console in your machine.

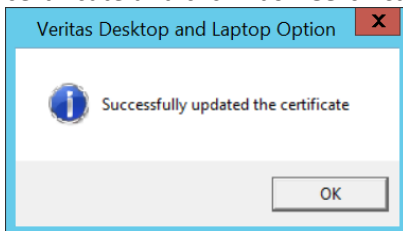
Note: If you want to use default certificate, you can use the certificate from the Apache folder. Alternatively, if you want to use an organization certificate, you need to procure an SSL certificate and use the same.

Below are the steps for adding and configuring Edge server:

1. In the **Veritas DLO** console, right click **Edge server** > **New Edge server**. The **Add Edge Server** pop-up screen appears.

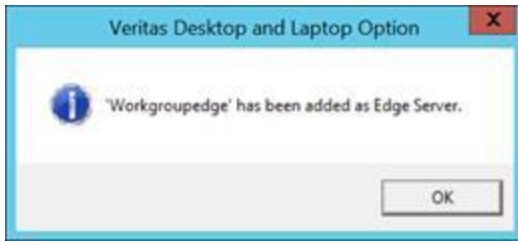


2. Enter the name of the Edge Server, Server Host, HTTP Port, HTTPS Port and browse the certificate and click **Push Certificate**.



Note: In DLO 9.6, the certificate is manually pushed.

3. After successfully updating the certificate, Edge Server is added in the workgroup environment and the following message appears:



The new workgroup Edge Server is added successfully in the console and a default IO Server will be tagged automatically.

Note: When configuring the Edge Server in DLO 9.5, by default, Edge Server is added to DLO server. Now, with DLO 9.6 onwards, Edge Server will not be added by default. Therefore, when user installs the Edge Server, it needs to be added manually.