

Veritas™ Desktop and Laptop Option 9.5  
Edge Server Installation and Configuration  
in  
Workgroup

|   |          |
|---|----------|
| <b>Introduction .....</b>   | <b>3</b> |
| <b>Port Requirements .....</b>  | <b>3</b> |
| <b>Installing Edge Server in Workgroup.....</b>                       | <b>3</b> |
| <b>Steps to Add and Configure the Edge Server in DLO console.....</b> | <b>5</b> |

## Introduction

This document explains how Veritas DLO Edge Server component can be installed and configured in a non-domain machine (workgroup environment).

The Edge Server acts as a gateway between external and internal network. When taking Backup Over Internet (BOI), DLO agent connects to Edge Server by providing authentication credentials and execute tasks.

**Existing Behaviour in 9.4** - Installing Edge Server component was mandatory on a machine connected to domain.

**Change in 9.5 onwards** - Edge Server component can be installed and configured in a non-domain machine (Workgroup) which was not supported, earlier. However, we continue to support the existing behavior of installing Edge Server in a domain environment, as well.

This change is applicable from 9.5 onwards.

## Port Requirements

This section explains the port requirements that needs to be ensured when installing Edge Server. The port requirement continues to be the same as DLO 9.4.

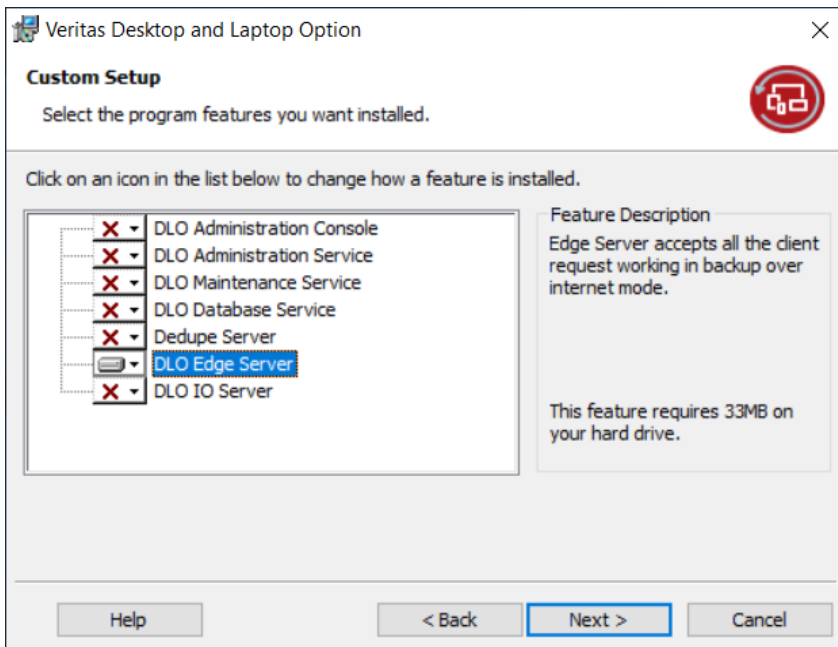
### Port Configuration for DLO Edge Server Component

| Process          | Port | Port Type | Non BOI Deployment | Exclusive BOI Deployment  | Occasional BOI Deployment   |
|------------------|------|-----------|--------------------|---|---|
| Edge Server Port | 443  | HTTPS     | NA                 | <b>Source (Outbound):</b><br>DLO Administration Console<br><b>Destination (Inbound):</b><br>DLO Edge Server | <b>Source (Outbound):</b><br>DLO Administration Console<br><b>Destination (Inbound):</b><br>DLO Edge Server |
| Edge Server Port | 90   | HTTP      | NA                 | <b>Source (Outbound):</b><br>DLO Administration Console<br><b>Destination (Inbound):</b><br>DLO Edge Server | <b>Source (Outbound):</b><br>DLO Administration Console<br><b>Destination (Inbound):</b><br>DLO Edge Server |

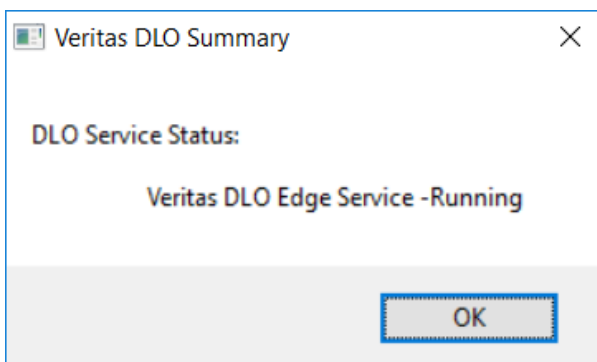
## Installing Edge Server in Workgroup

Below are the steps to deploy Edge Server in Workgroup environment:

1. Run the setup.exe from the installation package. Select the acceptance agreement. The following screen appears:



2. Select **DLO Edge Server** from list.
3. Select the destination folder path and start the installation process. After successful installation, the Veritas DLO Summary page appears as shown below:



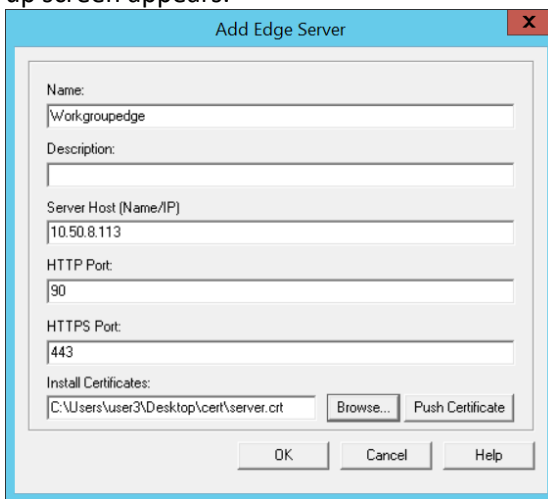
## Steps to Add and Configure the Edge Server in DLO console

To configure the Edge Server, keep handy the SSL certificate and key files. You can find it from Apache folder path where you've installed the DLO console in your machine.

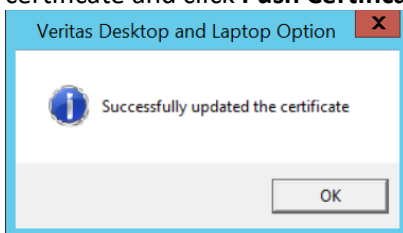
**Note:** If you want to use default certificate, you can use the certificate from the Apache folder. Alternatively, if you want to use an organization certificate, you need to procure an SSL certificate and use the same.

Below are the steps for adding and configuring Edge server:

1. In the **Veritas DLO** console, right click **Edge server** > **New Edge server**. The **Add Edge Server** pop-up screen appears.

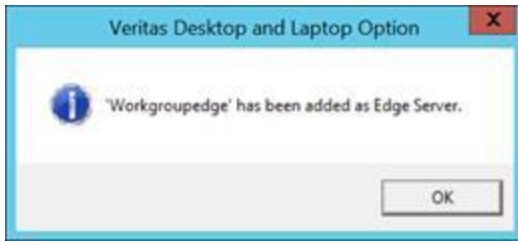


2. Enter the name of the Edge Server, Server Host, HTTP Port, HTTPS Port and browse the certificate and click **Push Certificate**.



**Note:** In DLO 9.5, the certificate is manually pushed.

3. After successfully updating the certificate, Edge Server is added in the workgroup environment and the following message appears:



The new workgroup Edge Server is added successfully in the console and a default IO Server will be tagged automatically.

**Note:** In DLO 9.5, when Edge Server is installed in Workgroup mode, it needs to be added manually.