

Arctera Desktop and Laptop Option 10.0 Mac Getting Started Guide



Documentation Version: 2025

Legal Notice

Copyright ©2025 Arctera US LLC. All rights reserved.

Arctera and the Arctera Logo are trademarks or registered trademarks of Arctera US LLC or its affiliates in the U.S. and other countries. Other names may be trademarks of their respective owners. This product may contain third-party software for which Arctera is required to provide attribution to the third party ("Third-party Programs"). Some of the Third-party Programs are available under open source or free software licenses. The License Agreement accompanying the Software does not alter any rights or obligations you may have under those open source or free software licenses. Refer to the Third-party Legal Notices document accompanying this Arctera product or available at:

<https://www.arctera.io/license-agreements>

The product described in this document is distributed under licenses restricting its use, copying, distribution, and de-compilation/reverse engineering. No part of this document may be reproduced in any form by any means without prior written authorization of Arctera US LLC and its licensors, if any.

THE DOCUMENTATION IS PROVIDED "AS IS" AND ALL EXPRESS OR IMPLIED CONDITIONS, REPRESENTATIONS AND WARRANTIES, INCLUDING ANY IMPLIED WARRANTY OF MERCHANTABILITY, FITNESS FOR A PARTICULAR PURPOSE OR NON-INFRINGEMENT, ARE DISCLAIMED, EXCEPT TO THE EXTENT THAT SUCH DISCLAIMERS ARE HELD TO BE LEGALLY INVALID. ARCTERA US LLC SHALL NOT BE LIABLE FOR INCIDENTAL OR CONSEQUENTIAL DAMAGES IN CONNECTION WITH THE FURNISHING, PERFORMANCE, OR USE OF THIS DOCUMENTATION. THE INFORMATION CONTAINED IN THIS DOCUMENTATION IS SUBJECT TO CHANGE WITHOUT NOTICE.

The Licensed Software and Documentation are deemed to be commercial computer software as defined in FAR 12.212 and subject to restricted rights as defined in FAR Section 52.227-19 "Commercial Computer Software - Restricted Rights" and DFARS 227.7202, et seq." Commercial Computer Software and Commercial Computer Software Documentation," as applicable, and any successor regulations, whether delivered by Arctera as on premises or hosted services. Any use, modification, reproduction release, performance, display or disclosure of the Licensed Software and Documentation by the U.S. Government shall be solely in accordance with the terms of this Agreement.

Arctera US LLC | www.arctera.io.

Contents

- Introduction 4**
- Installation 5**
 - System Requirements 5
 - Before Installing Desktop Agent on Mac 5
 - Installing Desktop Agent on Mac 6
 - Launching the Desktop Agent on Mac 7
- Configuration 10**
 - Using Default Backup Selections 10
 - Adding a Backup Selection 10
 - Modifying a Backup Selection 11
 - Deleting a Backup Selection 11
 - Backing up Files and Folders 11
 - Restoring Files and Folders 13
 - Uninstalling the Desktop Agent on Mac 15
- DLO Diagnostic Utility for Mac Clients 16**
- DLO Log Gather Utility 17**
- Frequently Asked Questions 18**
- Troubleshooting 19**

Introduction

Arctera™ Desktop and Laptop Option is a user centric backup solution that provides flexible implementation and centralized administration for backup and recovery of Windows and Mac desktops and laptops in the organization. This highly scalable solution with distributable components is suitable for environments of any scale, be it single-site, multi-site, or having remote offices, allowing you to protect even the most recent files with your users.

The Backup Over Internet (BOI) capability that protects endpoints connected outside the corporate network is available for the Mac endpoints as well.

DLO Mac agents are notarized, thereby ensuring compliance with Apple's safety guidelines.

The **Mac Getting Started Guide** details the steps to install and configure the DLO Desktop Agent on a Mac machine.

Installation

System Requirements

The following are the system requirements for this version of Desktop Agent that needs to be installed on a Mac computer.

Item	Description
Operating System	<ul style="list-style-type: none">macOS SequoiamacOS SonomamacOS Ventura
Processor /Disk Space	Apple's M1 or M2 chips, SSDs with at least 256GB disk space Note: MAC DLO Agent installations are not supported on Intel processor architecture and can be installed on ARM processor architecture alone.
Memory	Required: 16 GB RAM Recommended: 32 GB or more for better performance

Before Installing Desktop Agent on Mac

Complete the following tasks before installing the Desktop Agent on a Mac machine.

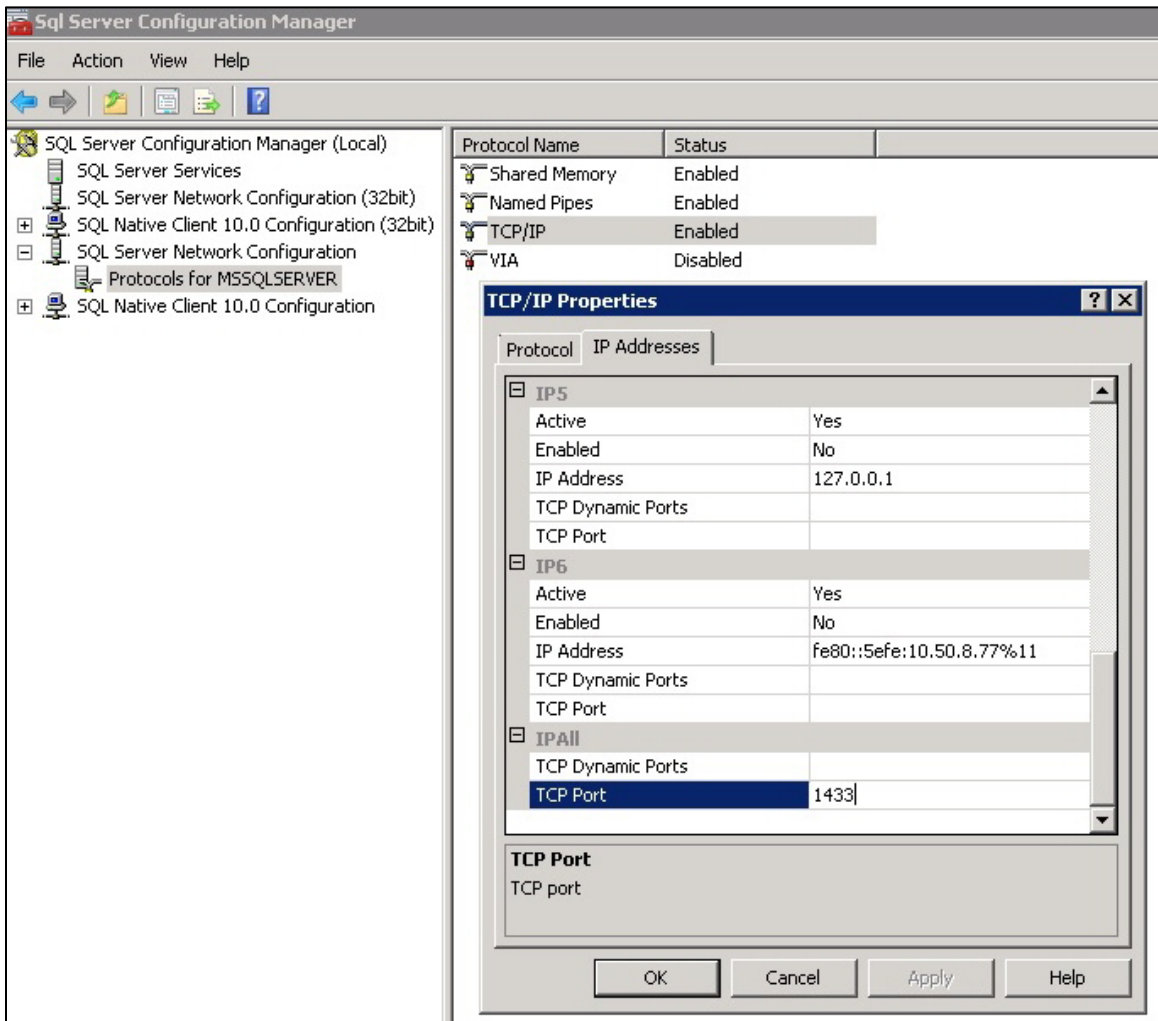
1. Install and configure DLO Administration Server on a Windows server machine.
2. The DLO administrator must ensure that the TCP/IP protocol is enabled for the DB instance, and the port number is set.
3. Irrespective of the firewall state in the DB server (ON or OFF), the administrator must enter the DB port in **SQL Server Configuration Manager > SQL Server Network Configuration > "Protocols for <Instance name>" > TCP/IP Protocol Settings > TCP Port.**

Note: The default DB port is **1433**.

- a. If the firewall is ON in the DB server, then this port should also be included in the firewall exception list.
4. Restart the DLO DB service after providing the TCP port number.
 5. In case a customized TCP Port is provided, then do the following on DLO Mac Agent once it is installed:
 - a. Open the `Agentconfiguration.plist` file located in `users/<username>/Applications/Veritas/DLO/.settings` folder.
 - b. Change the String value of the key `DBPort` from 1433 to the new value.

c. Launch the DLO Mac Agent.

Figure 1: TCP/IP Properties



Note: The default port to communicate with DB Server is **1433**.

6. To verify the communication to DB server use Telnet. (Example, `telnet <IP> <port>.`)

Installing Desktop Agent on Mac

Make sure that you have completed the prerequisite tasks as explained in the section [Before Installing Desktop Agent](#) on page 5.

To install the Desktop Agent on Mac:

1. From the desktop menu options, select **Finder**.
2. Select **Go > Connect to Server**.
3. In the **Server Address** field, type the network address of DLO Server using one of the following formats.

- smb://IPAddress/
- smb://DNSname/

4. Click **Connect**.

Note: You can directly type the server address along with the share name.

smb://IPAddress/DLOMacAgent.

5. From the list of shared folders, open **DLOMacAgent** folder, copy the **setup.ini**, **Certificates folder** and the **installer package** for Mac to same location in your Mac machine.
6. Double-click the file **Arctera_DLO_Agent.pkg**.
7. On the Welcome screen, click **Continue**.
8. Read the license and click **Continue**.
9. Click **Agree**.
10. The default installation path for Mac is **/Applications**. To change the install path, click the **Change Install Location** button, and do one of the following:
 - Select **Install for all users** to install Desktop Agent in the default location, that is, **/Applications**
 - Select **Install on a specific disk** to install in any other disk other than the default startup disk. This option is useful when you want to install the Desktop Agent on any additional hard disks or hard drive partitions that exist on the local Mac machine.
11. Click **Continue**.
12. Click **Install**.
13. Once the installation is completed, click **Close**.

Note: When the Mac Desktop Agent is installed on a computer that is not in a domain, and when you launch the Desktop Agent for the first time, you are prompted to enter the user name, password, and domain. Ensure to provide the relevant domain user credentials.

Launching the Desktop Agent on Mac

To launch the Desktop Agent for Mac:

1. Navigate to the location where you installed the Desktop Agent (typically **/Applications**), and double-click the application **ArcteraDLO**.

When you launch the Desktop Agent for the first time, a dialog is displayed.

Figure 2: User credentials at first time launch

Please enter your password for the account below. This account will be used to connect to the Media Server.

User Name : GODAVARI\user5

Password: Password

Save encrypted passwords used by DLO

Cancel Log In

2. Type the password. The User Name field displays the name of the user who has logged in.
3. Click **Log In**.

Note: By default, the **Save encrypted passwords used by DLO** check box is selected. This ensures that the user credentials are saved in the login Keychain. If this check box is not selected, then you need to type the password every time you launch the Desktop Agent.

4. Once the authentication is successful, an initializing screen is displayed and you can see a DLO tray app icon to the top right of the Desktop menu.
5. Click the Desktop Agent tray app icon and from the tray app menu, click **Open Desktop Agent**.
The Desktop Agent is launched and relevant status of the Agent is displayed in the Status menu.

Figure 3: Status of Desktop Agent

The screenshot displays the Desktop Agent status interface. On the left is a sidebar with three sections: **VIEWS** (Status, Backup Selection, Restore, History), **TASKS** (Run job, Refresh), and **TOOLS** (Options). The main content area is titled **Status** and features a green checkmark icon with the text **Your files are protected**. Below this, it states: **The next scheduled job will start on 05/08/2019 06:43:00 PM**. A section titled **Tasks (0)** contains an empty table with the following headers: **Operation**, **Status**, **Size**, **File**, and **In Folder**. Below the table is a **Backup Summary** section showing: **Backup Completion: 100%** and **Backup Selection: 64 files/120.24 KB**. A **Details..** link is provided. The bottom status bar shows **Your files are protected** on the left and **Working online** with an upward arrow icon on the right.

Configuration

This section explains how to configure the Desktop Agent and use the available features.

Using Default Backup Selections

The Desktop Agent is configured to back up commonly used files and folders by default. You can add additional backup selections or cancel the use of default backup selections.

The following folders are backed up by default:

Item	Description
Documents	All files in Documents
Desktop	All files on Desktop
Music	All files in Music
Movies	All files in Movies
Pictures	All files in Pictures

Adding a Backup Selection

After you install the Desktop Agent, you need to add or modify the backup selections to be able to take backups.

Backup selections can be added from the profile that exists either in the DLO Administration Server or in the Desktop Agent console.

For more information about backup selections, refer to the section **About Desktop Agent for Mac** in the *Arctera DLO Administrator's Guide*.

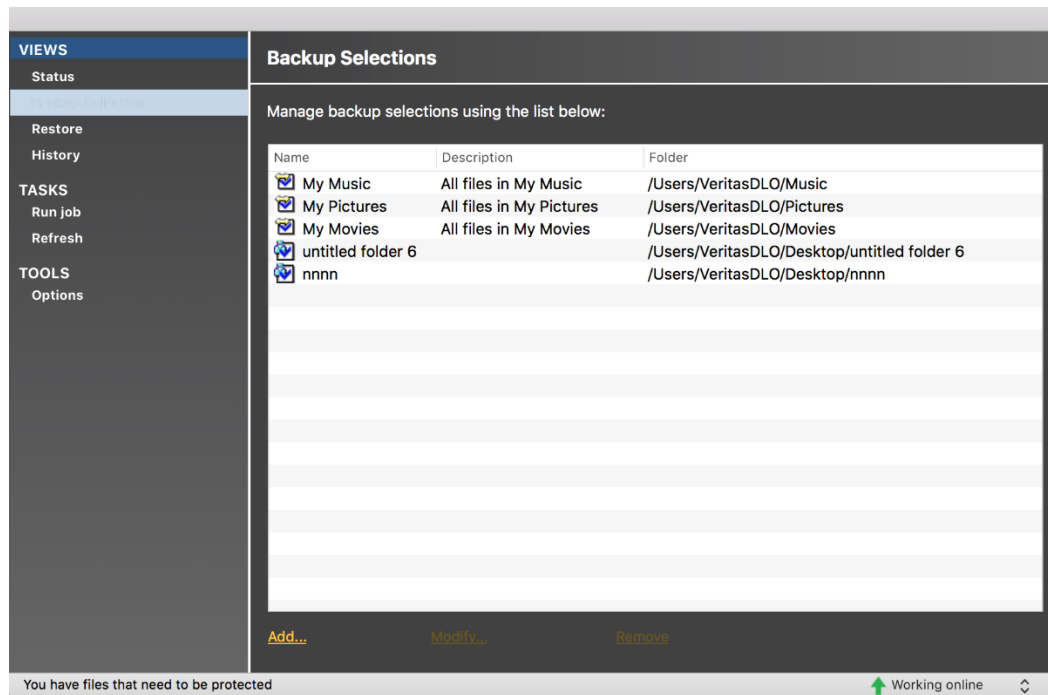
To add a backup selection:

Note: In this scenario, you can add a custom backup selection from the Desktop Agent console.

1. Under **Views** in the Tasks bar, click **Backup Selections**
 - a. Click **Add** to add a backup selection.
 - Or-
 - b. Drag the required backup selection folder to the right pane.

i You can drag only folders into the backup selection list and the current version supports the drag-and-drop of only **one** folder at a time.

Figure 4: Choosing backup selection folders



Modifying a Backup Selection

To modify an existing backup selection:

1. Under **Views** in the Tasks bar, click **Backup Selections**.
2. Select the required folder and click **Modify**.

Note: To make sure that you have the privileges to modify a profile backup selection, check the privileges in **User Settings** for the profile.

Deleting a Backup Selection

When you delete a backup selection, the backup files are deleted after the number of days specified in the backup selection.

To delete a backup selection:

1. Under **Views** in the Tasks Bar, click **Backup Selections**.
2. Select the backup selection you want to delete.
3. Click **Remove**.
4. Click **Yes** to confirm the deletion, or click **No** to cancel.

Backing up Files and Folders

You can use three different backup modes in the Desktop Agent to back up files and folders that

exist within a backup selection.

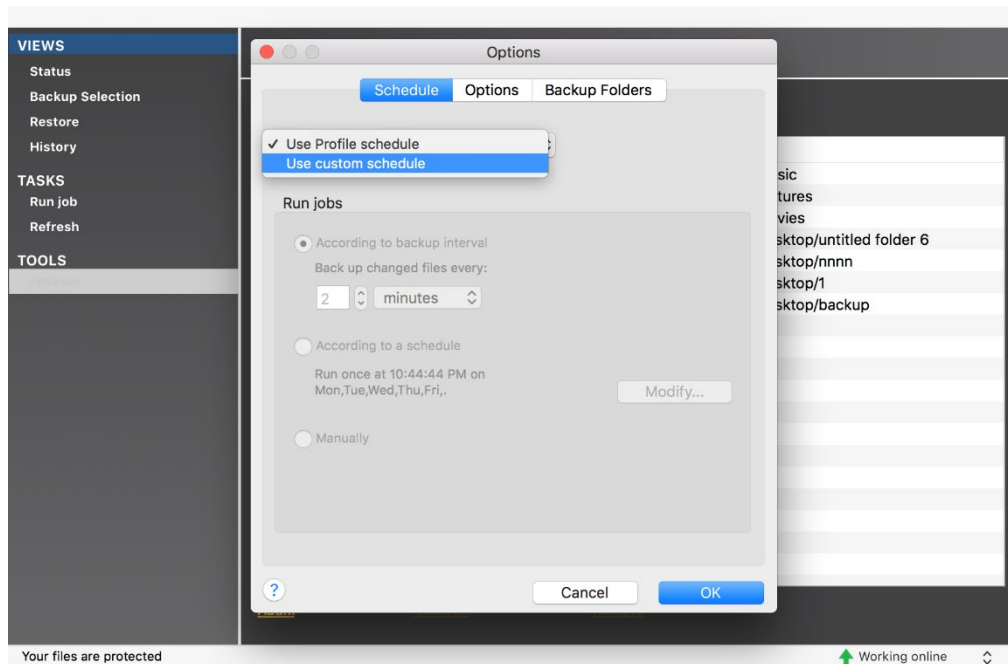
Note: You can configure all these backup modes from the server profile or from the Desktop Agent console, only if you have the privileges. This privilege is configured in the **User Privileges** setting of the profile.

1. **Continuous Backup:** The backup is triggered according to the interval set and in this backup mode, the Desktop Agent continuously triggers backup as per the interval set without user intervention. To choose this option, select **Tools > Options**, and click the **Schedule** tab. In the **Run Jobs** pane, select the option **According to Backup Interval**.

Note: The default value set in this interval is 30 minutes.

2. **Scheduled Backup:** The backup is configured to run as per the customized schedule. Select **Tools > Options**, and click **Schedule** tab. In the **Run Jobs** pane, select the option **According to a Scheduled Interval**.
 - Click **Modify** to modify the schedule. You can specify whether you want to run the schedule daily or on specific days in a week. You can specify the frequency of the schedule by choosing the options **Run once at** and **Run every**.
3. **Manual Backup:** This option allows you to run the backups manually. Under **Tasks**, click **Run Job** to perform a manual backup.

Figure 5: Backup modes



To change the backup mode from the Desktop Agent console:

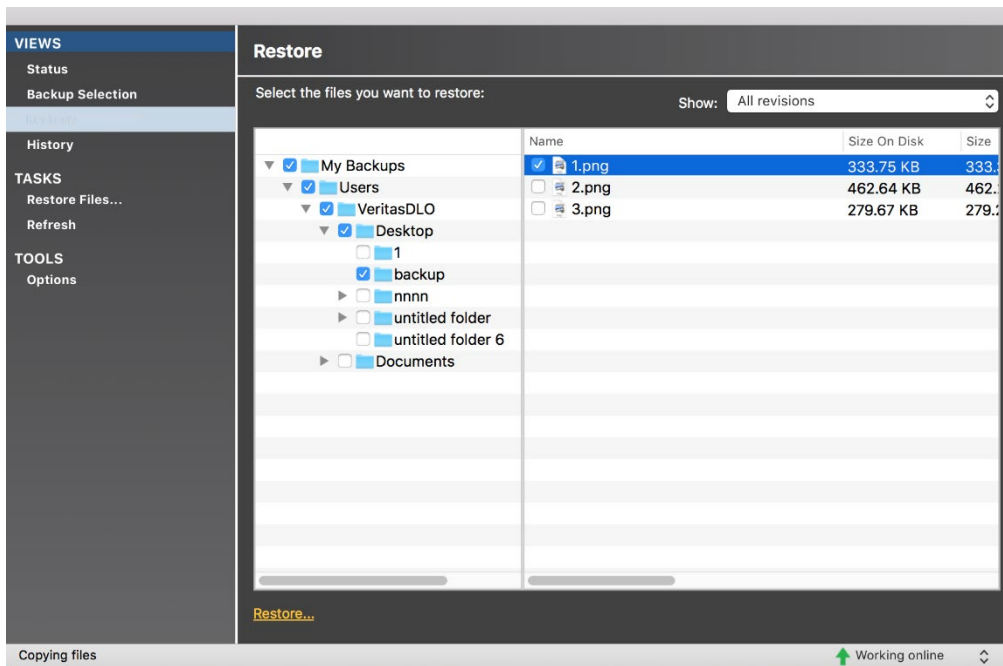
1. Select **Tools > Options**, and click the **Schedule** tab.
2. Select **Use custom schedule** from the drop-down list and select the required options in the **Run Jobs** pane.

Restoring Files and Folders

To restore backed up files:

1. Under **Views**, click **Restore**.
2. Select one of the following revision display options:
 - **All Revisions:** All file revisions are displayed and are available as restore selections.
 - **Latest Revision:** Only the latest file revision is displayed and is available as a restore selection.
3. Expand **My Backups** folder; select the check box for the required folder that should be restored. When a backup folder is selected, all the files within that folder are also selected. You can either restore the entire backup folder or select only specific files within the folder.

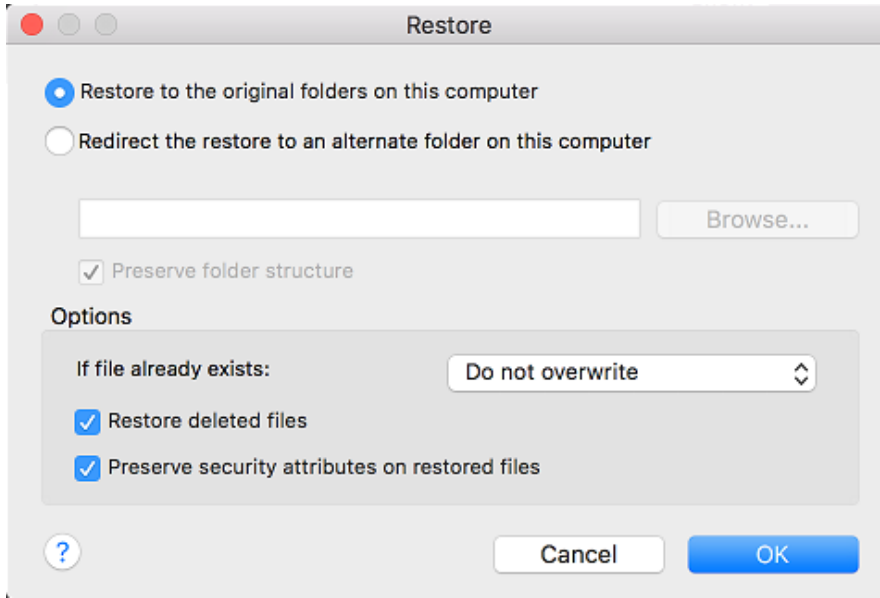
Figure 6: Restore window



You can restore the backed up files and folders in two ways:

4. In the Restore menu, right-click any backup folder or right-click any file within the folder and click Restore. In this option, you need not select the check box for the files or folders.
5. Select the check box for the required folder or files within a folder and click the **Restore...** link displayed at the bottom of the window.
6. In the **Restore** window, select one of the options:

Figure 7: Restore options



- Select **Restore to original folders on this computer** to restore the selected files to the original folder. This option is selected by default. OR
 - Select **Redirect the restore to an alternate folder on this computer** to restore the files to an alternate location on the same computer. Browse and select the location to restore files.
7. Select the check box **Preserve folder structure** to restore the data with its original directory structure. If you clear this option, then the entire data (including the data in subdirectories) is restored to the path you specify.
 8. If the file already exists, then in the **Options** pane, select one of the following options from the drop-down list.
 - a. **Do not overwrite:** Does not overwrite the file that exists in the restore location.
 - b. **Prompt:** Displays a prompt, to confirm overwriting the file.
 - c. **Overwrite:** Overwrites the existing file with the restored file.
 9. Next, select these options:
 - a. **Restore Deleted files:** Select this option if you want to restore files even though the source file has been deleted.
 - b. **Preserve Security attributes on restored files:** Select this option to preserve security information in the restored files.
 10. Click **OK**. The files are restored to the specified location.

Note: The files restored to the original location in the original computer, which is part of a backup selection will not be added to the backup queue as the restored files in the original location and the network user data folder are the same.

Uninstalling the Desktop Agent on Mac

To uninstall the Desktop Agent, delete the folder where the app is located. That is, navigate to the path where the Desktop Agent is installed, (example: `/Applications`) right-click the application **ArcteraDLO** and click **Move to Trash**. You have to enter the local administrator credentials for uninstalling the DLO Mac Agent.

DLO Diagnostic Utility for Mac Clients

This utility is used to scan and diagnose the status of DLO Services and accessibility of various components in DLO. It can be run to narrow down issues in case of failures in terms of backups, restores and other connectivity failures.

Note: DLO Diagnostic utility tool will support only English language.

To run the diagnostic utility

- 1 Go to Applications.
- 2 Select **DLODiagnosticUtility** tool and launch.
- 3 Arctera DLO Diagnostic Utility tool will be launched, and scan will be performed.

Options available in Diagnostic Utility

- **Export:** to generate a report. The report by default will be generated in the below path:
/User/<username>
- **Rescan:** Click on **Rescan** button to rerun the diagnostic utility
- **Quick Diagnose:** to extract the errors that have occurred during backup and restore jobs from the History logs and generates history data analysis and Backup Status report for all the users.

DLO Log Gather Utility

The DLO Log Gather tool enables you to collect logs from various product install paths, log path, registry export, operating system, and from the installed applications.

To gather the logs

1. Go to Applications.
2. Select the **DLOLogGatherUtility** tool and launch.
3. Arctera DLO Log Gather tool will be launched.
4. Select the appropriate check boxes to gather the required logs.
 - DLO Installation Logs
 - DLO Application Logs
 - Operating System Logs
5. Enter the path of the directory or click **Browse** to select the output directory where the gathered logs should be saved.
6. Optional: Enter the **Incident number** and **Notes** if any.
7. In the **Additional files to gather** field, enter the file names or click **Browse** to select the additional files to be gathered.
8. Click **Add Files**. To remove files from the list use the **Remove Selected File(s)** option.
9. Click **Gather** to start collecting the selected logs. This will gather all the DLO logs from the host machine and create a file in the selected output directory (/User/<username>/Documents) in the following format: IncidentNumber_MachineHostname_currentTime.tar.gz

Frequently Asked Questions

Along with the installer, what files are installed, and where are these files located?

The installer copies `ArcteraDLO.app` (Desktop Agent app) to the installed location: `/Applications`. Third-party libraries such as `libACE.dylib`, `libcrypto.so`, `libfreetds.so` and `AgentConfiguration.plist` (contains DB settings, Media Server Details, LUDF and NUDF path) are bundled along with the `ArcteraDLO.app`.

If there is a custom DB port other than the default DB port, how does the Desktop Agent communicate with DB server through this custom port?

Mac agent can still communicate with DB server through a custom DB port with some changes in the `Agentconfiguration.plist` file. For more information, see [Before Installing Desktop Agent on Mac](#)

Who can use Desktop Agent and is there any user privilege associated with it.

Only users who are part of a domain can use Desktop Agent.

Are the credentials saved when I enter the password in the credential prompt? Also, if I change the password, how can I launch the Desktop Agent again?

In the credential prompt, the check box **Save encrypted passwords used by DLO** is selected by default. Selecting this option ensures that the user credentials are saved in the `login` keychain: `com.DLOClient.mac`.

When you change the password, you need to type the password again the next time you launch the Desktop Agent. This new password will overwrite the existing password in the `login` keychain: `com.DLOClient.mac`.

What should I do if I want the credential prompt to be displayed every time I launch the Desktop Agent?

In the credential prompt, clear the check box **Save encrypted passwords used by DLO**. In case you have selected this check box and launched the Agent, then go to Keychain Access and delete the `login` keychain `com.DLOClient.mac` where the user credentials are stored.

Can I do a push installation of DLO Mac Agents from the server?

No, Push installation is not supported for DLO Mac Agents.

Troubleshooting

I am unable to launch the Desktop Agent, as the following message is displayed: “The Desktop Agent cannot launch until it can contact the server database.”

This problem occurs if the Desktop Agent is unable to communicate with the DB server, and due to one of these reasons:

- DB server is shut down
- Unable to telnet to DB server through the specified port
- The `Agentconfiguration.plist` file contains an invalid DB Server name/IP or invalid database port. Hence, make sure the setting is accurate in the `AgentConfiguration.plist` file.

I am unable to launch the Desktop Agent, as the following message is displayed: “Unable to configure a Desktop Agent. No settings found for the current user and no automatic user assignments match.”

This error occurs because the AUA settings are not configured in the DLO Administration server, or the user is not part of the configured AUA settings.

To resolve this issue, configure the AUA settings or manually add this user account in the server, and launch the Desktop Agent again.

I am unable to launch the DLO Diagnostic Utility, as the following message is displayed: “Unable to connect to DLO Administration Server. Failed to load configuration settings”

This problem occurs if we are trying to launch the DLO Diagnostic Utility on a machine where the Desktop Agent has never been run.

To ensure the DLO Diagnostic Utility is launched, ensure that the DLO Agent has been launched or run at least once to create the configuration settings.

The following error message is displayed: “Authentication Failed. Do you want to try again?”

This error message is displayed when you enter an invalid password in the credential prompt. Click **OK** to enter the password again, or click **Cancel** to launch the Desktop Agent again.

How do I view the files that are backed up locally (or) where is DUDF located?

DUDF path is actually hidden.

- The DUDF path is `/Users/<username>/Applications/Veritas/DLO/`.
- Files that are backed up locally are located in `/Users/<username>/Applications/Veritas/DLO/.dlo/_lm`.
- Application logs are located in `/Users/<username>/Applications/Veritas/DLO/.settings`

History logs are located in

`/Users/<username>/.Applications/Veritas/DLO/.dlo/.logs.`

Does DLO MAC Agent trigger backups for Apple Mail and Microsoft Outlook versions for Mac?

Yes, Desktop Agent triggers backups for Apple Mail and Microsoft Outlook versions for Mac, only if you have added the path of the Mail directory as part of the profile (or) custom backup selection.